



PNUE



**PROTOCOLE CONCERNANT LES AIRES  
SPECIALEMENT PROTEGEES ET LA DIVERSITE  
BIOLOGIQUE EN MEDITERRANEE**

**LISTE DES ESPÈCES EN DANGER OU MENACÉES**



© P. Sanchez



© D. Demopotos



© A. Bouajina



PNUE

Programme des Nations Unies pour l'Environnement



Plan d'Action pour la Méditerranée



Centre d'Activités Régionales pour les Aires Spécialement Protégées

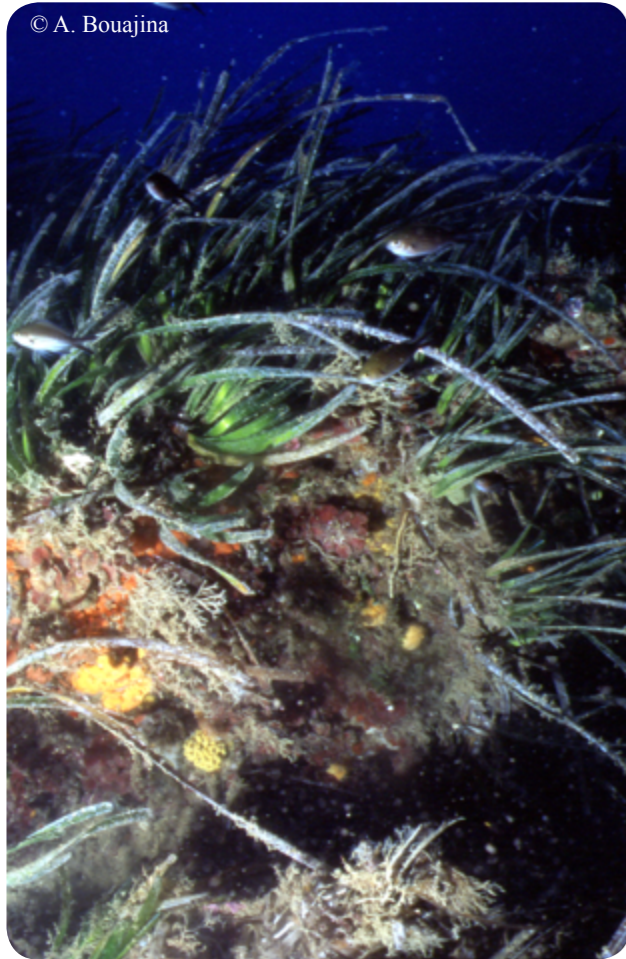
# **PROTOCOLE CONCERNANT LES AIRES SPECIALEMENT PROTEGEES ET LA DIVERSITE BIOLOGIQUE EN MEDITERRANEE**

## **ANNEXE II**

### **LISTE DES ESPECES EN DANGER OU MENACEES**

# MAGNOLIOPHYTA

*Cymodocea nodosa* (Ucria) Ascherson  
*Posidonia oceanica* (Linnaeus) Delile  
*Zostera marina* Linnaeus  
*Zostera noltii* Hornemann



# CHLOROPHYTA

*Caulerpa ollivieri* Dostál

# HETEROKONTOPHYTA

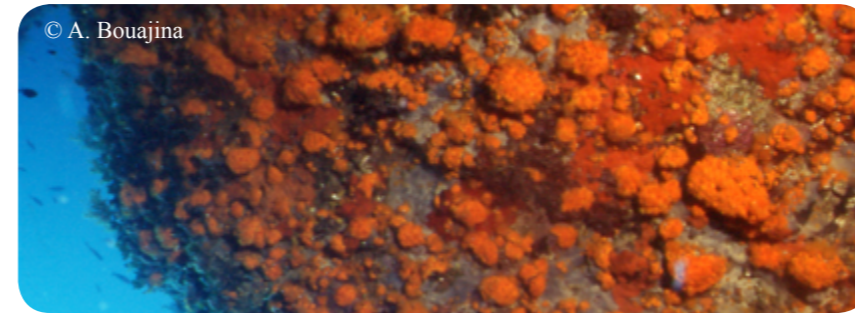
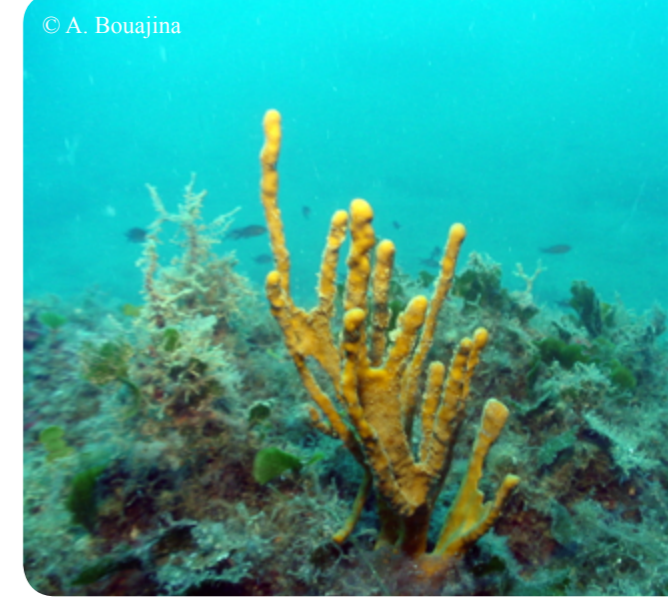
*Cystoseira* genus (except *Cystoseira compressa*)  
*Kallymenia spathulata* (J. Agardh) P.G. Parkinson  
*Laminaria rodriguezii* Bornet  
*Sargassum acinarium* (Linnaeus) Setchell  
*Sargassum flavifolium* Kützing  
*Sargassum hornschuchii* C. Agardh  
*Sargassum trichocarpum* J. Agardh

# RHODOPHYTA

*Fucus virsoides* J. Agardh  
*Gymnogongrus crenulatus* (Turner) J. Agardh  
*Lithophyllum byssoides* (Lamarck) Foslie (Synon. *Lithophyllum lichenoides*)  
*Ptilophora mediterranea* (H. Huvé) R.E. Norris  
*Schimmelmanna schousboei* (J. Agardh) J. Agardh  
*Sphaerococcus rhizophylloides* J.J. Rodríguez  
*Tenarea tortuosa* (Esper) Lemoine  
*Titanoderma ramosissimum* (Heydrich) Bressan & Cabioch (Synon. *Goniolithon byssoides*)  
*Titanoderma trochanter* (Bory) Benhissoune et al.

# PORIFERA

*Aplysina* sp. plur.  
*Asbestopluma hypogea* Vacelet & Boury-Esnault, 1995  
*Axinella cannabina* (Esper, 1794)  
*Axinella polypoides* Schmidt, 1862  
*Geodia hydronium* (Jameson, 1811)  
*Petrobiona massiliana* (Vacelet & Lévi, 1958)  
*Sarcotragus foetidus* (Schmidt, 1862)\* (synon. *Ircina foetida*)  
*Sarcotragus pipetta* (Schmidt, 1868)\* (synon. *Ircinia pipetta*)  
*Tethya* sp. plur.

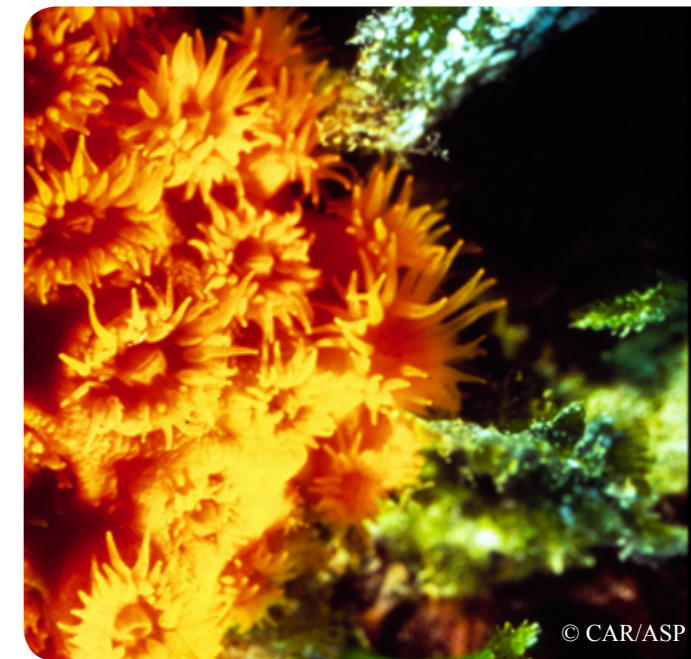


# BRYOZOA

*Hornera lichenoides* (Linnaeus, 1758)

# CNIDARIA

*Astroides calycularis* (Pallas, 1766)  
*Errina aspera* (Linnaeus, 1767)  
*Savalia savaglia* Nardo, 1844 (synon. *Gerardia savaglia*)  
*Antipathella subpinnata* (Ellis & Solander, 1786)  
*Antipathes dichotoma* (Pallas, 1766)  
*Antipathes fragilis* (Gravier, 1918)  
*Leiopathes glaberrima* (Esper, 1792)  
*Parantipathes larix* (Esper, 1790)  
*Callogorgia verticillata* (Pallas, 1766)  
*Cladocora caespitosa* (Linnaeus, 1767)  
*Cladocora debilis* (Milne Edwards & Haime, 1849)  
*Ellisella paraplexauroides* (Stiasny, 1936)  
*Lophelia pertusa* (Linnaeus, 1758)  
*Madrepora oculata* (Linnaeus, 1758)



# MOLLUSCA

*Charonia lampas* (Linnaeus, 1758) (= *Ch. Rubicunda* = *Ch. Nodifera*)

*Charonia tritonis variegata* (Lamarck, 1816) (= *Ch. Seguenziae*)

*Dendropoma petraeum* (Monterosato, 1884)

*Erosaria spurca* (Linnaeus, 1758)

*Gibbula nivosa* (Adams, 1851)

*Lithophaga lithophaga* (Linnaeus, 1758)

*Luria lurida* (Linnaeus, 1758) (= *Cypraea lurida*)

*Mitra zonata* (Marryat, 1818)

*Patella ferruginea* (Gmelin, 1791)

*Patella nigra* (Da Costa, 1771)

*Pholas dactylus* (Linnaeus, 1758)

*Pinna nobilis* (Linnaeus, 1758)

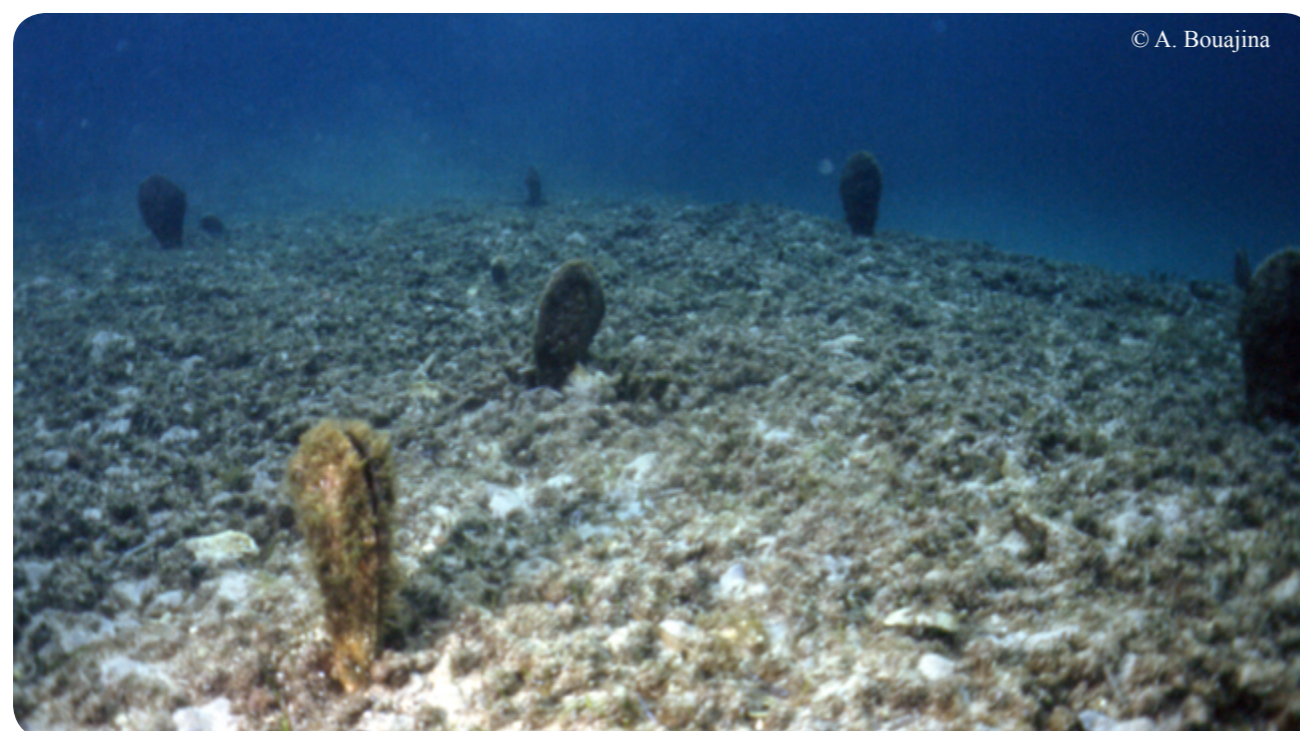
*Pinna rudis* (= *P. pernula*) (Linnaeus, 1758)

*Ranella olearia* (Linnaeus, 1758)

*Schilderia achatidea* (Gray in G.B. Sowerby II, 1837)

*Tonna galea* (Linnaeus, 1758)

*Zonaria pyrum* (Gmelin, 1791)



© A. Bouajina

# CRUSTACEA

*Ocypode cursor* (Linnaeus, 1758)

*Pachylasma giganteum* (Philippi, 1836)

# ECHINODERMATA

*Asterina pancerii* (Gasco, 1870)

*Centrostephanus longispinus* (Philippi, 1845)

*Ophiaster ophidianus* (Lamarck, 1816)

# PISCES

*Acipenser naccarii* (Bonaparte, 1836)

*Acipenser sturio* (Linnaeus, 1758)

*Aphanius fasciatus* (Valenciennes, 1821)

*Aphanius iberus* (Valenciennes, 1846)

*Carcharias taurus* (Rafinesque, 1810)

*Carcharodon carcharias* (Linnaeus, 1758)

*Cetorhinus maximus* (Gunnerus, 1765)

*Dipturus batis* (Linnaeus, 1758)

*Galeorhinus galeus* (Linnaeus, 1758)

*Gymnura altavela* (Linnaeus, 1758)

*Hippocampus guttulatus* (Cuvier, 1829)

(synon. *Hippocampus ramulosus*)

*Hippocampus hippocampus* (Linnaeus, 1758)

*Huso huso* (Linnaeus, 1758)

*Isurus oxyrinchus* (Rafinesque, 1810)

*Lamna nasus* (Bonnaterre, 1788)

*Lethenteron zanandreae* (Vladykov, 1955)

*Leucoraja circularis* (Couch, 1838)

*Leucoraja melitensis* (Clark, 1926)

*Mobula mobular* (Bonnaterre, 1788)

*Odontaspis ferox* (Risso, 1810)

*Oxynotus centrina* (Linnaeus, 1758)

*Pomatoschistus canestrini* (Ninni, 1883)

*Pomatoschistus tortonesei* (Miller, 1969)

*Pristis pectinata* (Latham, 1794)

*Pristis pristis* (Linnaeus, 1758)

*Rhinobatos cemiculus* (E. Geoffroy Saint-Hilaire, 1817)

*Rhinobatos rhinobatos* (Linnaeus, 1758)

*Rostroraja alba* (Lacépède, 1803)

*Sphyrna lewini* (Griffith & Smith, 1834)

*Sphyrna mokarran* (Rüppell, 1837)

*Sphyrna zygaena* (Linnaeus, 1758)

*Squatina aculeata* (Dumeril, in Cuvier, 1817)

*Squatina oculata* (Bonaparte, 1840)

*Squatina squatina* (Linnaeus, 1758)

*Valencia hispanica* (Valenciennes, 1846)

*Valencia letourneuxi* (Sauvage, 1880)



# REPTILES

- Caretta caretta* (Linnaeus, 1758)
- Chelonia mydas* (Linnaeus, 1758)
- Dermochelys coriacea* (Vandelli, 1761)
- Eretmochelys imbricata* (Linnaeus, 1766)
- Lepidochelys kempii* (Garman, 1880)
- Trionyx triunguis* (Forskål, 1775)



# AVES

- Calonectris diomedea* (Scopoli, 1769)
- Ceryle rudis* (Linnaeus, 1758)
- Charadrius alexandrinus* (Linnaeus, 1758)
- Charadrius leschenaultii columbinus* (Lesson, 1826)
- Falco eleonora* (Géné, 1834)
- Halcyon smyrnensis* (Linnaeus, 1758)
- Hydrobates pelagicus* (Linnaeus, 1758)
- Larus armenicus* (Buturlin, 1934)
- Larus audouinii* (Payraudeau, 1826)
- Larus genei* (Breme, 1839)
- Larus melanocephalus* (Temminck, 1820)
- Numenius tenuirostris* (Viellot, 1817)
- Pandion haliaetus* (Linnaeus, 1758)
- Pelecanus crispus* (Bruch, 1832)
- Pelecanus onocrotalus* (Linnaeus, 1758)
- Phalacrocorax aristotelis* (Linnaeus, 1761)
- Phalacrocorax pygmeus* (Pallas, 1773)
- Phoenicopterus ruber* (Linnaeus, 1758)
- Puffinus mauretanicus* (Lowe, PR, 1921)
- Puffinus yelkouan* (Brünnich, 1764)
- Sterna albifrons* (Pallas, 1764)
- Sterna bengalensis* (Lesson, 1831)
- Sterna caspia* (Pallas, 1770)
- Sterna nilotica* (Gmelin, JF, 1789)
- Sterna sandvicensis* (Latham, 1878)

# MAMMALIA

- Balaenoptera acutorostrata* (Lacépède, 1804)
- Balaenoptera borealis* (Lesson, 1828)
- Balaenoptera physalus* (Linnaeus, 1758)
- Delphinus delphis* (Linnaeus, 1758)
- Eubalaena glacialis* (Müller, 1776)
- Globicephala melas* (Trail, 1809)
- Grampus griseus* (Cuvier G., 1812)
- Kogia simus* (Owen, 1866)
- Megaptera novaeangliae* (Borowski, 1781)
- Mesoplodon densirostris* (de Blainville, 1817)
- Monachus monachus* (Hermann, 1779)
- Orcinus orca* (Linnaeus, 1758)
- Phocoena phocoena* (Linnaeus, 1758)
- Physeter macrocephalus* (Linnaeus, 1758)
- Pseudorca crassidens* (Owen, 1846)
- Stenella coeruleoalba* (Meyen, 1833)
- Steno bredanensis* (Cuvier in Lesson, 1828)
- Tursiops truncatus* (Montagu, 1821)
- Ziphius cavirostris* (Cuvier G., 1832)

