

# POCKET IDENTIFICATION GUIDE OF MAIN VULNERABLE SPECIES INCIDENTALLY CAUGHT IN TURKISH FISHERIES

Simplified guide adapted for Turkey (GSAs 22 and 24) from the Identification guide of vulnerable species incidentally caught in Mediterranean fisheries



## MARINE MAMMALS



### *Stenella coeruleoalba*

Striped dolphin /  
Çizgili yunus  
Ad: 1.8-2.6 m  
NB: 85-95 cm



Glo Med



### *Grampus griseus*

Risso's dolphin / Grampus  
Ad: 3 - 4 m / NB: 1.2 - 1.5 m



Glo Med



### *Delphinus delphis*

Common dolphin / Tirtak  
♂: 2.0-2.6 m / ♀: 2.4 m /  
NB: 80-90 cm



Glo Med



### *Tursiops truncatus*

Common bottlenose dolphin /  
Afalina  
♂: 2.5 - 3.9 m  
♀: 2.2-3.2  
NB: 1-1.2 m



Glo Med



### *Physeter macrocephalus*

Sperm whale / Kaşalot  
♂: 16-18 m / ♀: 11-12 m / NB: 3.3-4.2 m



Glo Med



### *Ziphius cavirostris*

Cuvier's beaked whale /  
Gagalı balina  
♂: up to 7.5 m  
♀: up to 7 m  
NB: 2-2.7 m



Glo Med



### *Phocoena phocoena*

Harbour porpoise /  
Mudur  
♂: 1,8 m  
♀: 2 m  
NB: 50-70 cm



Glo



### *Balaenoptera acutorostrata*

Common minke whale /  
Mink Balinası  
♂: 7m / ♀: 7,30 m / NB: 2.4-2.8 m



Glo



### *Balaenoptera physalus*

Fin whale / Uzun Balina  
♂: 18-20 m / ♀: 20-22 m / NB: 6-6.5 m



Glo Med



### *Steno bredanensis*

Rough-toothed dolphin /  
Kabadışli yunus  
Ad: 2.2 - 2.5 m / NB: 1m



Glo Med



Glo

### *Pseudorca crassidens*

False killer whale / Yalancı katil balina  
Ad: 3,7-5,5 m / NB: 1,8-2,1m



### *Globicephala melas*

Long-finned pilot whale /  
Siyah yunus  
♂: 5.5-6.2 m / ♀: 4.5-5.5 m  
NB: 1.7-1.8 m



Glo Med



### *Mesoplodon densirostris*\*

Blainville's beaked whale / Dişli gagalı balinat  
♂: 4,5m / ♀: 5,2m / NB: 2,1m



Glo

## SEABIRDS



**LC** *Larus michahellis*  
Yellow-legged gull / Gümüş Martı  
**Glo** Wingspan: 120 – 140 cm



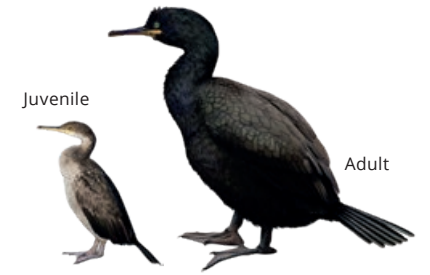
**LC** *Larus melanocephalus*  
Mediterranean gull / Akdeniz martısı  
**Glo** W: 94 – 102 cm



**LC** *Larus audouinii*  
Audouin's gull / Ada martısı  
**Glo** W: 117 – 128 cm



**LC** *Phalacrocorax carbo*  
Great Cormorant / Karabatak  
**Glo** W: 77 – 94 cm



**LC** *Gulosus aristotelis desmarestii*  
European shag / Tepeli karabatak  
**Glo** W: 115 – 125 cm



**LC** *Larus ridibundus*  
Black-headed gull / karabaş martı  
**Glo** W: 86 – 99 cm

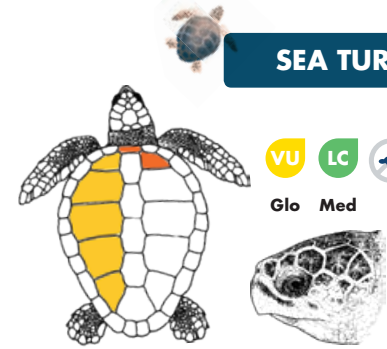


**LC** *Thalasseus sandvicensis*  
Sandwich tern / Karagagalı sumru  
**Glo** W: 85 – 97 cm



**LC** *Sterna hirundo*  
Common Tern / Sumru  
**Glo** W: 70 – 80 cm

## SEA TURTLES



**VU** **LC**  
**Glo** **Med**  
*Caretta caretta*  
Loggerhead turtle / Sini Kaplumbağası  
♂: 75-80 cm; ♀: 66-85 cm



**EN**  
**Glo**  
*Chelonia mydas*  
Green turtle / Yeşil kaplumbağa  
Ad (♂ and ♀): 80-120 cm



**VU** *Puffinus yelkouan*  
Yelkouan shearwater / Yelkovan  
**Glo** W: 70 – 84 cm



**LC** *Calonectris diomedea*  
Scopoli's shearwater / Boz yelkovan  
**Glo** W: 112 – 122 cm



**LC** *Hydrobates pelagicus*  
European storm petrel / Firtina kırlangıcı  
**Glo** W: 37 – 41 cm

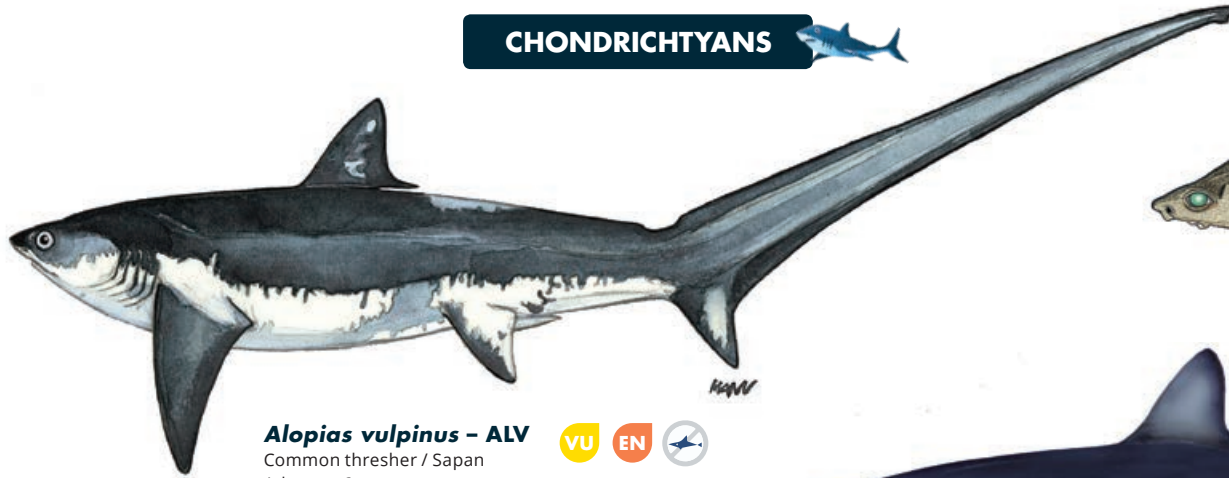


**VU**  
**Glo**  
*Dermochelys coriacea*  
Leatherback sea turtle /  
Deri sırtlı deniz kaplumbağası  
Average adult length 1.4-1.6 m



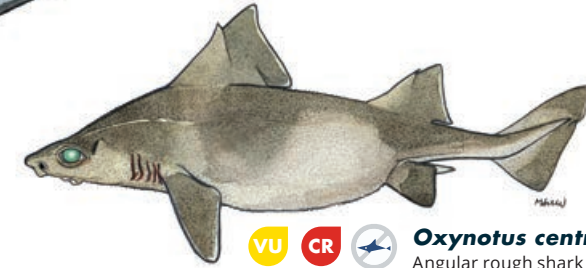
**VU** **CR**  
**Glo** **Med**  
*Trionyx triunguis*  
African softshell turtle /  
Nil kaplumbağası  
Ad: 50-95 cm

## CHONDRICHTYANS



**Alopias vulpinus - ALV**  
Common thresher / Sapan  
Ad: up to 6 m

VU EN   
Glo Med



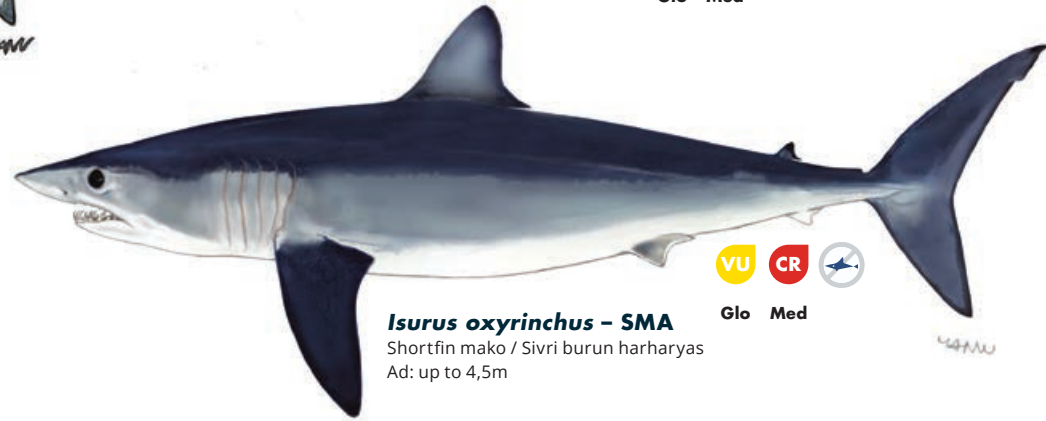
VU CR   
Glo Med

**Oxynotus centrina - OXY**  
Angular rough shark / Domuz Balığı  
Ad: up to 1,5 m



**Centrophorus cf granulosus - GUP**  
Gulper shark / Yutucu köpekbalığı  
Ad: up to 1,2 m

DD CR   
Glo Med



**Isurus oxyrinchus - SMA**  
Shortfin mako / Sivri burun harharyas  
Ad: up to 4,5m

VU CR   
Glo Med



**Galeorhinus galeus - GAG**  
Tope shark / Camgöz balığı  
Ad: up to 1,6m

VU VU   
Glo Med



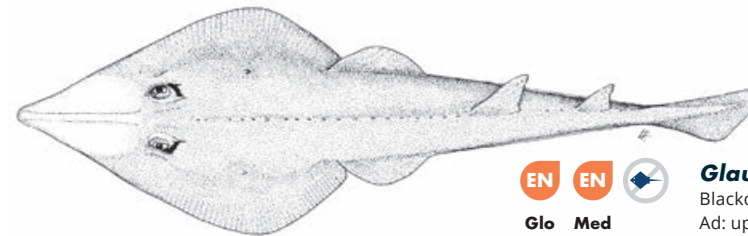
**Rhinobatos rhinobatos - RBC**  
Common guitarfish / Uzun Kemane  
Ad: up to 1,5m

EN EN   
Glo Med



**Hepttranchias perlo - HXT**  
Sharpnose sevengill shark /  
Yedi yarıklı boz camgöz  
Ad: up to 1,4m

NT DD   
Glo Med



EN EN   
Glo Med

**Glaucostegus cemiculus - RBC**  
Blackchin guitarfish / Kemane  
Ad: up to 2,42m

## CHONDRICHTYANS



### *Leucoraja fullonica* - RJF

Shagreen skate /  
Telatin vatoz  
Ad: up to 1,2m



Glo Med



### *Leucoraja naevus* - RJN

Cuckoo skate / Benli vatoz  
Ad: up to 0,81m



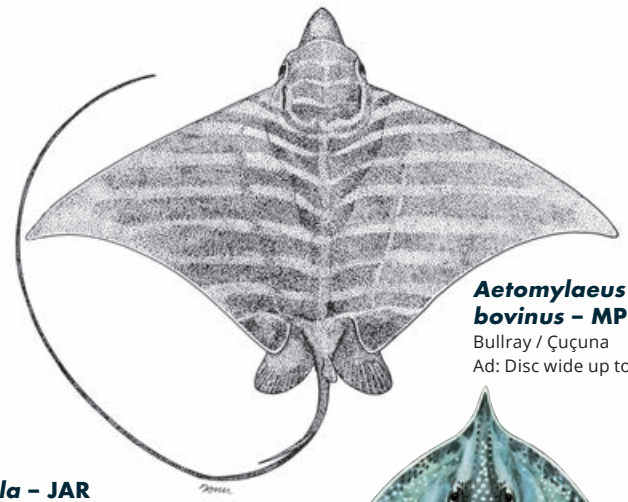
Glo Med



Glo Med

### *Raja radula* - JAR

Rough skate / Pürüzlü vatoz  
Ad: up to 0,7m



### *Aetomylaeus bovinus* - MPO

Bullray / Çuçuna  
Ad: Disc wide up to 2,2m



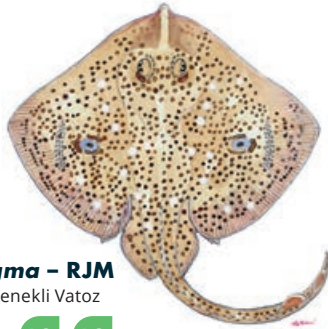
Glo Med

### *Raja polystigma* - RJM

Speckled skate / Benekli Vatoz  
Ad: up to 0,7m



Glo Med

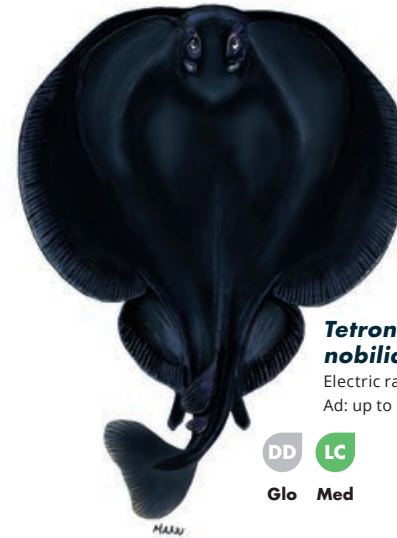


### *Dasyatis pastinaca* - JDP

Common stingray / Rina  
Ad: Disc wide up to 0,68m



Glo Med



### *Tetronarce nobiliana* - TTO

Electric ray / Çarpan  
Ad: up to 1,8m



Glo Med



### *Rostroraja alba* - RJA

White skate /  
Beyaz Vatoz  
Ad: up to 2,4m



Glo Med

### *Raja undulata* - RJU

Undulate skate /  
Boyalı Vatoz  
Ad: up to 1,14m



Glo Med

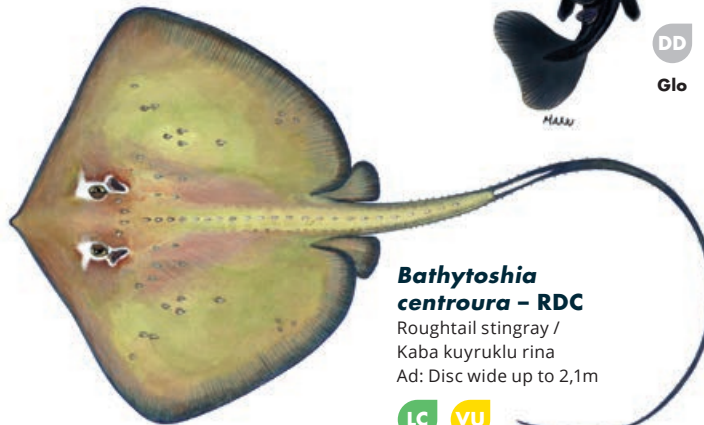
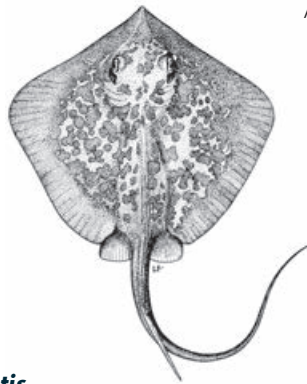


### *Dasyatis marmorata* - RDQ

Marbled stingray /  
Benekli rina  
Ad: Disc wide up to 60cm



Glo Med

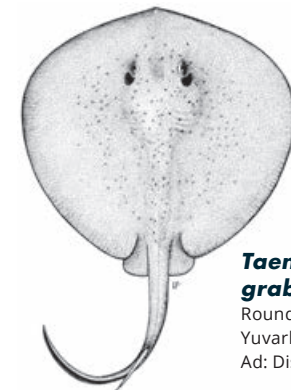


### *Bathytoshia centroura* - RDC

Roughtail stingray /  
Kaba kuyruklu rina  
Ad: Disc wide up to 2,1m



Glo Med



### *Taeniurus grabatus* - RTB

Round stingray /  
Yuvarlak Rina  
Ad: Disc wide up to 0,8m



Glo Med

# SPONGES



## Massive keratose sponges – KERA



*Sarcotragus* sp.



*Sarcotragus* sp.



*Hippospongia communis*



*Ircinia variabilis*

## Globular sponges – GLOS



*Suberites domuncula*



*Tethya aurantium*



*Therea* spp.

## Massive Mediterranean stony sponge – PETR



*Petrosia ficiformis* (burgundy morph)



*Petrosia ficiformis* (white morph)

## Lamellate to cup-shaped sponges – LAMS



*Spongia lamella*



*Calyx nicaeensis*

## Arborescent sponges – ARBS



*Axinella* sp.

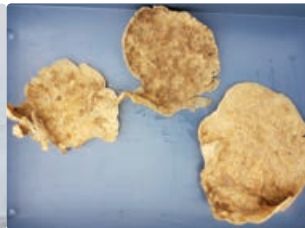


*Axinella cannabina*

## Fan-shaped sponges – FANS



*Phakellia ventilabrum*



*Phakellia robusta*

## Massive, (sub-) spherical hard sponges (*Geodia* spp.) – GEOD



*Geodia cydonium*

## Lamellate rock sponges (*Leiodermatium* sp.) – ROCK



*Leiodermatium pfeifferae*

## Massive-tubular gold sponges (*Aplysina* spp.) – APLY



*Aplysina* spp.

## Other massive sponges (to be recorded as "Other massive") – OTHR



*Agelas oroides*

## Birds' nest glass sponge – BIRD



*Pheronema carpenteri*

## Felt vase glass sponge – FELT



*Asconema setubalense*

**CORALS**

**Soft corals – SOFT**



*Alcyonium palmatum*

**Thick and tall red, yellow fan-shaped gorgonians – FANG**



*Acanthogorgia hirsuta*

*Paramuricea clavata*

VU

**Seapens – PENS**



*Pteroeides spinosum* and *Pennatula* spp.

**Bamboo corals – BAMB**



*Isidella elongata*

CR

**Bright yellow or salmon-pink hard corals (*Dendrophyllia* spp.) – DEND**



Dead *dendrophyllids*

*Dendrophyllia cornigera*

EN

*Dendrophyllia ramea*

VU

**Thin, delicate white, reddish, yellow fan-shaped gorgonians – THIG**



*Paramuricea macrospina*

**Precious red coral – REDC**



*Corallium rubrum*

EN

**Flexible white and salmon-pink fan-shaped gorgonians (*Eunicella* spp.) – EUNI**



*Eunicella cavolini*

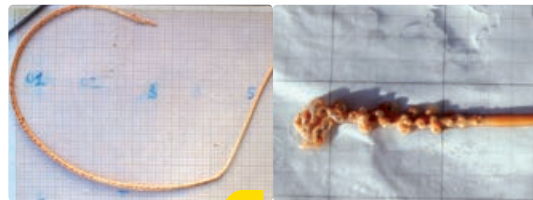
*Eunicella verrucosa*

**Salmon-pink, brittle fan-shaped gorgonians – CALL**



*Callogorgia verticillata*

**White, stem-like sea pens – STEM**

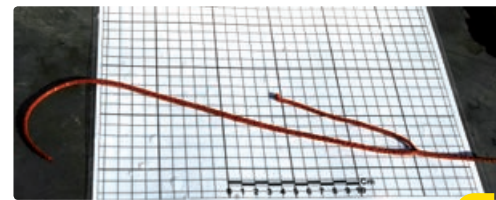


*Funiculina quadrangularis*

VU

*Kophobelemnion stelliferum*

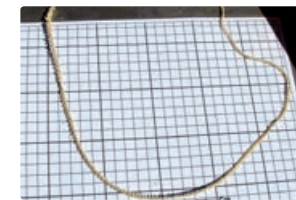
**Candelabrum-shaped, red gorgonians – ELLP**



*Ellisella paraplexauroides*

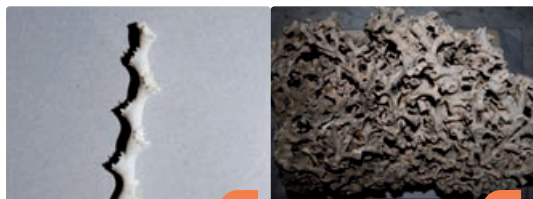
VU

**Tall, white or yellow whip gorgonians (*Viminella flagellum*) – VIMF**



*Viminella flagellum*

**White corals – WHIT**



*Madrepora oculata*

EN

*Lophelia pertusa*

EN

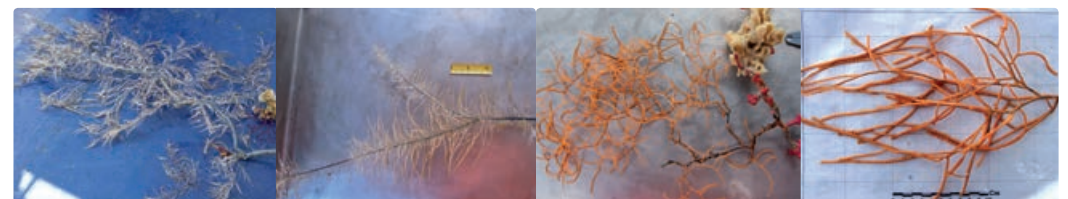
**Colonial hard corals – CLAD**



*Cladocora caespitosa*

EN

**Arborescent black corals – BLAC**



*Antipathella subpinnata*

*Parantipathes larix*

*Leiopathes glaberrima*

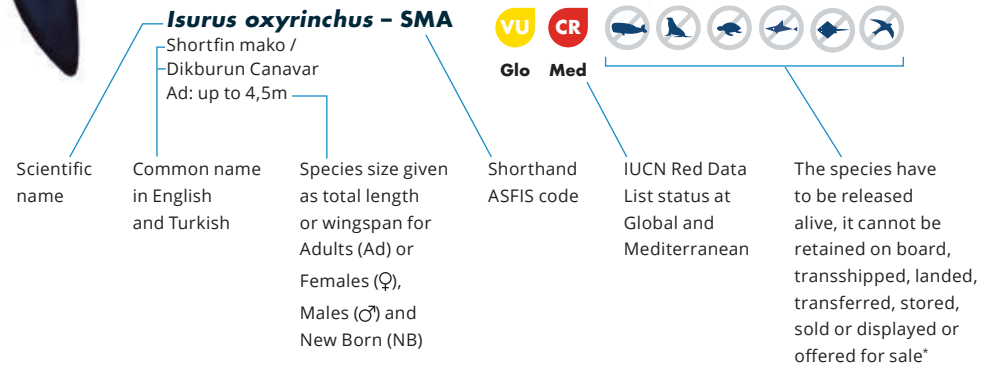
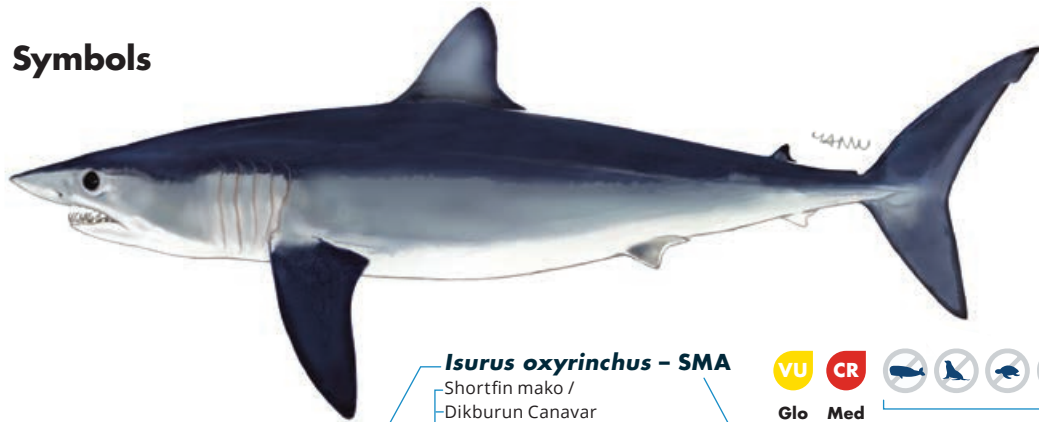
EN

*Antipathes dichotoma*

## Abbreviations

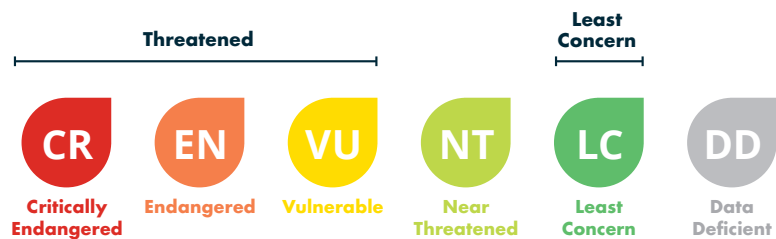
Ad: Adult  
 ♂: Male  
 ♀: Female  
 NB: New Born  
 W: Wingspan

## Symbols



## Key to IUCN Red List category symbols

For each species sheets, the IUCN categories relating to the conservation status both globally (Glo) and Mediterranean (Med) level are reported, according to the following scheme:



Geographical subarea (GSA) 22 refers to the Aegean Sea and GSA 24 to the Northern Levant Sea. If the incidentally caught species is not included in this guide, please refer to the **Identification guide of vulnerable species incidentally caught in Mediterranean fisheries**, which also provides detailed information on the conservation status, regulations and protection of each species (under ACCOBAMS, SPA/BD Protocol, CITES, CMS, GFCM, IUCN).  
 FAO Original scientific illustrations archive. Reproduced with permission.

\* GFCM recommendations related to the management and conservation of vulnerable species in the GFCM area of application: seabirds (Rec. GFCM/35/2011/3); sea turtles (Rec. GFCM/35/2011/4); cetaceans (Rec. GFCM/36/2012/2; Res. GFCM/43/2019/2); sharks and rays (Rec. GFCM/36/2012/3; Rec. GFCM/42/2018/2) and corals (Res. GFCM/43/2019/6).  
 Central Hunting Commission of Turkey 2019-2020 Resolutions



QR Code