

# POCKET IDENTIFICATION GUIDE OF MAIN VULNERABLE SPECIES INCIDENTALLY CAUGHT IN ITALIAN FISHERIES

Simplified guide adapted for Italian (GSA 18) from the Identification guide of vulnerable species incidentally caught in Mediterranean fisheries



## MARINE MAMMALS



### *Tursiops truncatus*

Common bottlenose dolphin /  
Tursiopo

♂: 2.5 - 3.9 m

♀: 2.2 - 3.2 m

NB: 1 - 1.2 m



Glo Med



### *Stenella coeruleoalba*

Striped dolphin /  
*Stenella striata*

Ad: 1.8 - 2.6 m

NB: 85 - 95 cm



Glo Med



### *Delphinus delphis*

Short-beaked common  
dolphin / Delfino comune

♂: 2.0 - 2.6 m / ♀: 2.4 m /

NB: 80 - 90 cm



Glo Med



### *Ziphius cavirostris*

Cuvier's beaked whale /  
Zifio

♂: up to 7.5 m

♀: up to 7 m

NB: 2 - 2.7 m



Glo Med



### *Grampus griseus*

Risso's dolphin /  
Grampo o Delfino di Risso

Ad: 3 - 4 m / NB: 1.2 - 1.5 m



Glo Med



### *Globicephala melas*

Long-finned pilot whale /  
Globicefalo

♂: 5.5 - 6.2 m / ♀: 4.5 - 5.5 m

NB: 1.7 - 1.8 m



Glo Med



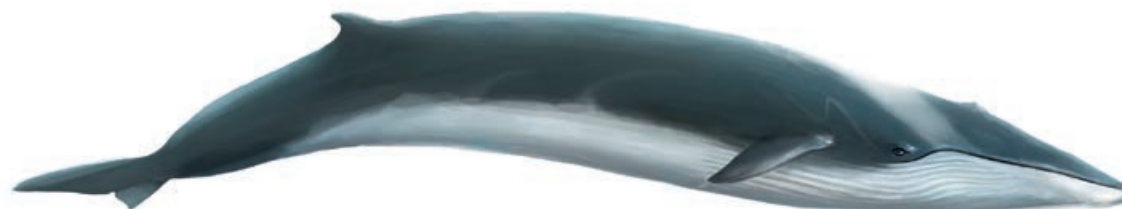
### *Physeter macrocephalus*

Sperm whale / Capodoglio

♂: 16 - 18 m / ♀: 11 - 12 m / NB: 3.3 - 4.2 m



Glo Med



### *Balaenoptera physalus*

Fin whale / Balenottera comune

♂: 18 - 20 m / ♀: 20 - 22 m / NB: 6 - 6.5 m



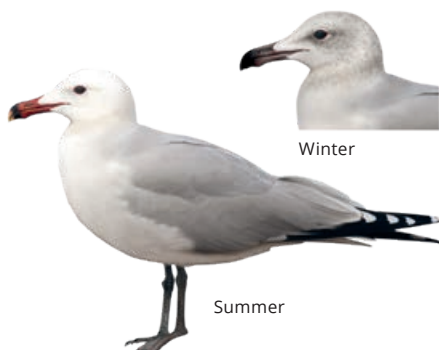
Glo Med



SEABIRDS



**LC** *Larus michahellis*  
Yellow-legged gull / Gabbiano reale  
**Glo** Wingspan: 120 – 140 cm



**VU** *Larus audouinii*  
Audouin's gull / Gabbiano corso  
**Glo** W: 117 – 128 cm



**LC** *Phalacrocorax carbo*  
Great Cormorant / Cormorano  
**Glo** W: 77 – 94 cm



**LC** *Gulosus aristotelis desmarestii*  
European shag / Marangone dal ciuffo  
**Glo** W: 115 – 125 cm



**VU** *Puffinus yelkouan*  
Yelkouan shearwater / Berta minore  
**Glo** W: 70 – 84 cm



**LC** *Calonectris diomedea*  
Scopoli's shearwater / Berta maggiore  
**Glo** W: 112 – 122 cm



SEA TURTLES



**VU** **LC**  
**Glo** **Med**  
**Caretta caretta**  
Loggerhead turtle / Tartaruga caretta  
♂: 75 – 80 cm; ♀: 66 – 85 cm



**EN**  
**Glo**  
**Chelonia mydas**  
Green turtle / Tartaruga verde  
Ad (♂ and ♀): 80 – 120 cm



**VU**  
**Glo**  
**Dermochelys coriacea**  
Leatherback sea turtle / Tartaruga liuto  
Average adult length 1.4 – 1.6 m

## CHONDRICHTYANS



***Alopias vulpinus* - ALV**  
Thresher shark / Squalo volpe  
Ad: up to 6 m



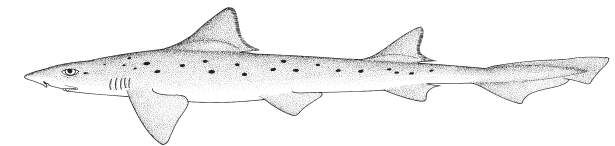
Glo Med



***Galeorhinus galeus* - GAG**  
Tope shark / Canesca  
Ad: up to 1.6m



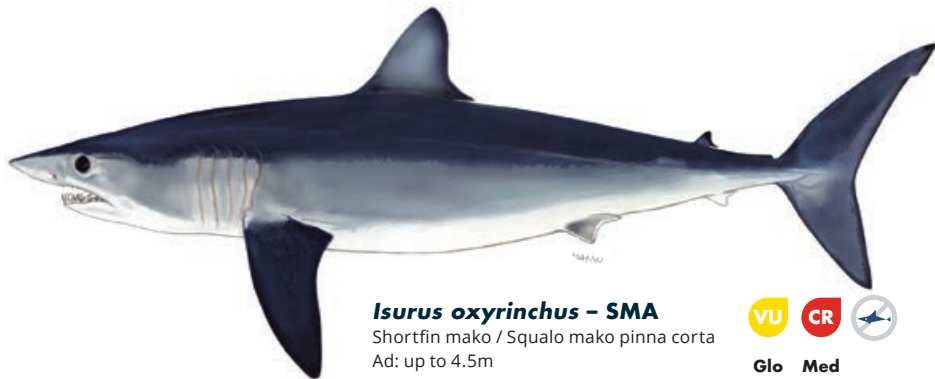
Glo Med



***Mustelus punctulatus* - MPT**  
Blackspotted smooth-hound /  
Palombo punteggiato  
Ad: up to 1.9 m



Glo Med



***Isurus oxyrinchus* - SMA**  
Shortfin mako / Squalo mako pinna corta  
Ad: up to 4.5m



Glo Med



***Mustelus asterias* - SDS**  
Starry smooth-hound shark /  
Palombo stellato  
Ad: up to 1.4 m



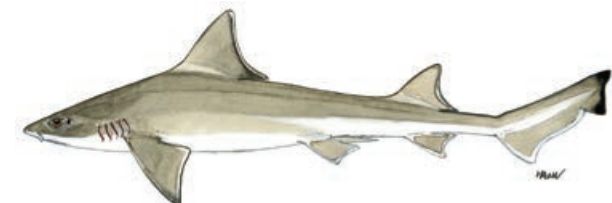
Glo Med



***Hexanchus griseus* - SBL**  
Bluntnose six-gill shark /  
Squalo capopiatto  
Ad: up to 5 m



Glo Med



***Mustelus mustelus* - SMD**  
Smooth-hound / Palombo  
Ad: up to 2 m



Glo Med

## CHONDRICHTYANS



### *Galeus melastomus* – SHO

Blackmouth catshark / Gattuccio boccanera  
Ad: up to 90 cm



Glo Med



### *Scyliorhinus canicula* – SYC

Small-spotted catshark / Gattuccio  
Ad: up to 1 m (60 cm in Mediterranean)



Glo Med

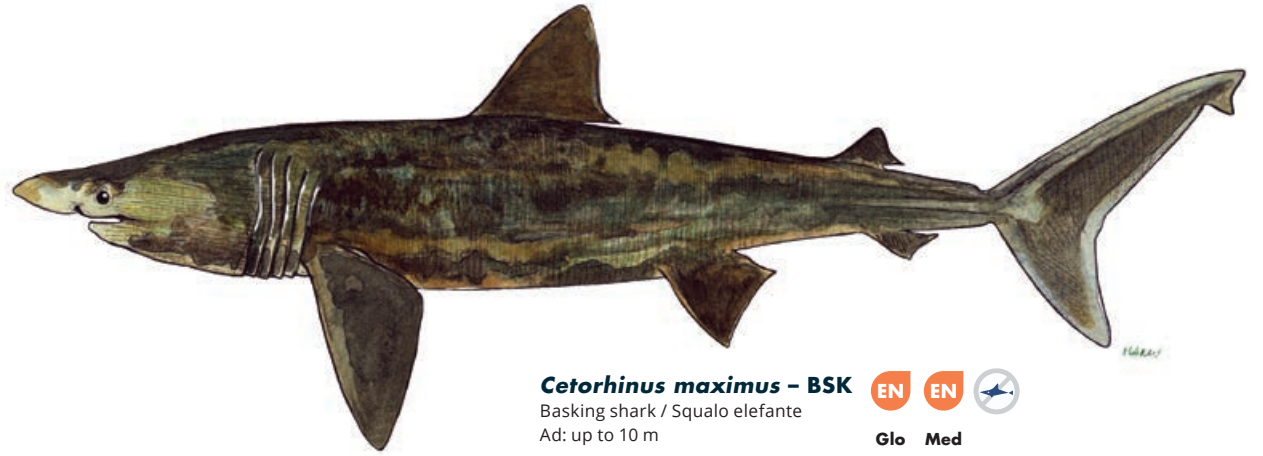


### *Scyliorhinus stellaris* – SYT

Nursehound / Gattopardo  
Ad: up to 1.7 m



Glo Med

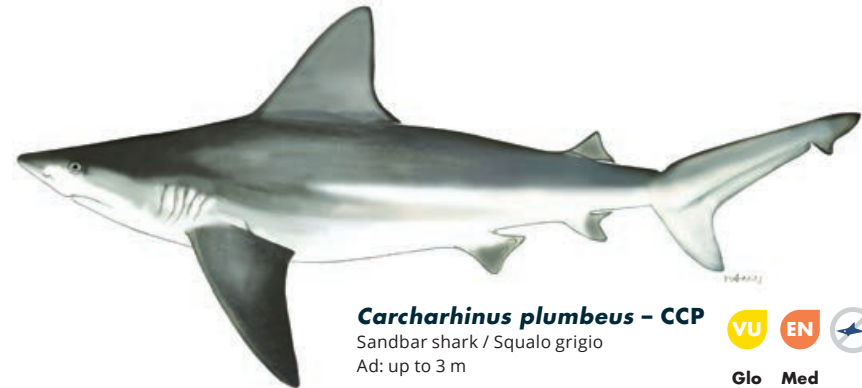


### *Cetorhinus maximus* – BSK

Basking shark / Squalo elefante  
Ad: up to 10 m



Glo Med

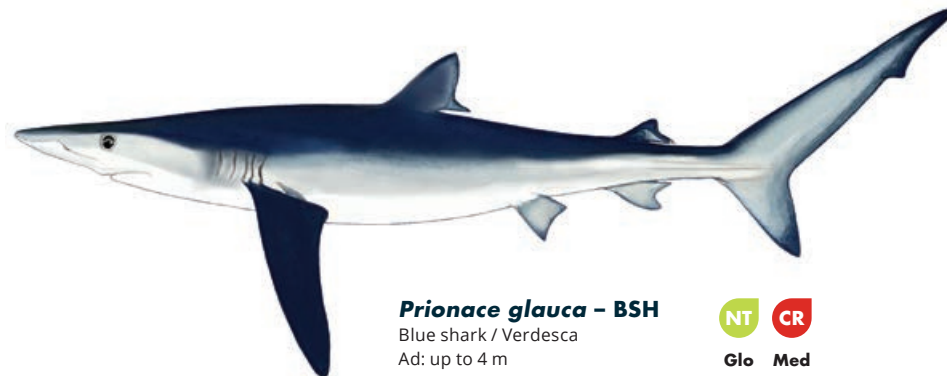


### *Carcharhinus plumbeus* – CCP

Sandbar shark / Squalo grigio  
Ad: up to 3 m



Glo Med



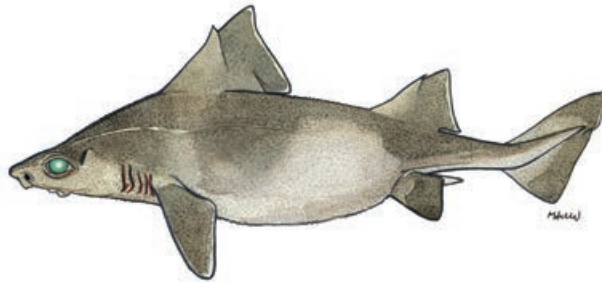
### *Prionace glauca* – BSH

Blue shark / Verdesca  
Ad: up to 4 m



Glo Med

## CHONDRICHTYANS



***Oxynotus centrina* – OXY**  
Angular rough shark / Pesce porco  
Ad: up to 1.5 m



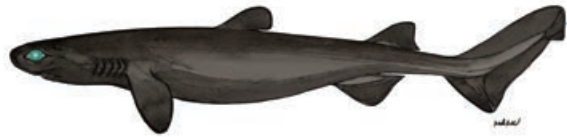
Glo Med



***Squalus acanthias* – DGS**  
Picked dogfish / Squalus acanthias  
Ad: up to 2 m



Glo Med



***Dalatias licha* – SCK**  
Kitefin shark / Zigrino  
Ad: up to 1.82 m



Med



***Squalus blainville* – QUB**  
Longnose spurdog / Spinarolo bruno  
Ad: 50 – 80 cm in total length,  
occasionally until 1.1 m



Glo Med



***Centrophorus cf uyato* – GUP**  
Gulper shark / Sagri  
Ad: up to 1.2 m



Glo Med



***Etmopterus spinax* – ETX**  
Velvet belly / Sagri nero o Moretto  
Ad: up to 60 cm



Glo Med



***Heptranchias perlo* – HXT**  
Sharpnose sevengill shark /  
Squalo manzo  
Ad: up to 1.4m



Glo Med

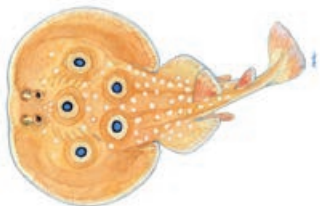
## CHONDRICHTYANS



### *Torpedo marmorata* – TTR

Marbled electric ray /  
Torpedine mazzata  
Ad: up to 1 m in total length

DD LC  
Glo Med



### *Torpedo torpedo* – TTV

Common torpedo /  
Torpedine occhiuta  
Ad: 60 cm in total length

DD LC  
Glo Med

### *Pteroplatytrygon violacea* – PLS

Pelagic stingray /  
Trigone viola  
Ad: up to 80 cm  
total length

LC LC  
Glo Med



### *Tetronarce nobiliana* – TTO

Electric ray /  
Torpedine nera  
Ad: up to 1.8m

DD LC  
Glo Med



### *Leucoraja circularis* – RJ1

Sandy ray / Razza rotonda  
Ad: up to 1.2 m total length

EN CR

Glo Med



### *Raja asterias* – JRS

Mediterranean  
starry ray /  
Razza stellata  
Ad: up to 80 cm in total length

NT NT  
Glo Med



### *Raja clavata* – RJC

Thornback ray / Razza chiodata  
Ad: up to 90-130 cm in total length

NT NT  
Glo Med



### *Raja miraletus* – JAI

Brown ray / Razza quattrocchi  
Ad: up to 70 cm in total length

LC LC  
Glo Med



### *Raja polystigma* – RJM

Speckled skate / Razza polistimma  
Ad: up to 70 cm

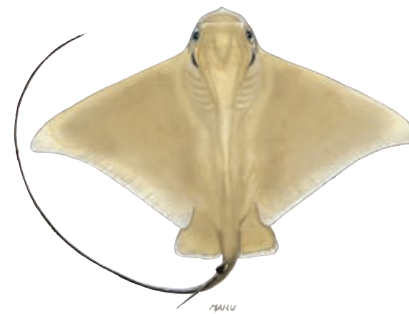
LC LC  
Glo Med



### *Dasyatis pastinaca* – JDP

Common stingray / Pastinaca  
Ad: Disc wide up to 68 cm

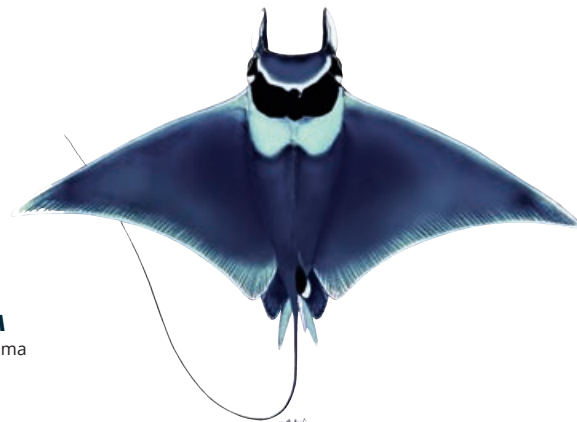
DD VU  
Glo Med



### *Myliobatis aquila* – MYL

Common eagle ray / Aquila di mare  
Ad: Disc wide up to 1.5 m

DD VU  
Glo Med



### *Mobula mobular* – RMM

Devil fish / Mobula o Diavolo di mare  
Ad: Disc wide up to 5.2 m

EN EN

Glo Med



### *Dipturus oxyrinchus* – RJO

Pocheteau noir /  
Razza monaca  
Ad: Disc wide up to 1.5 m

NT NE  
Glo Med



### *Chimaera monstrosa* – CMO

Rabbit fish / Chimera  
Ad: up to 1 m

NT NT  
Glo Med

# SPONGES



## Massive keratose sponges – KERA



*Sarcotragus* sp.



*Sarcotragus* sp.



*Hippospongia communis*



*Ircinia variabilis*

## Globular sponges – GLOS



*Suberites domuncula*



*Tethya aurantium*



*Therea* spp.

## Massive Mediterranean stony sponge – PETR



*Petrosia ficiformis* (burgundy morph)



*Petrosia ficiformis* (white morph)

## Lamellate to cup-shaped sponges – LAMS



*Spongia lamella*



*Calyx nicaeensis*

## Arborescent sponges – ARBS



*Axinella* sp.

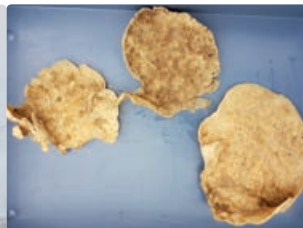


*Axinella cannabina*

## Fan-shaped sponges – FANS



*Phakellia ventilabrum*



*Phakellia robusta*

## Massive, (sub-) spherical hard sponges (*Geodia* spp.) – GEOD



*Geodia cydonium*

## Lamellate rock sponges (*Leiodermatium* sp.) – ROCK



*Leiodermatium pfeifferae*

## Massive-tubular gold sponges (*Aplysina* spp.) – APLY



*Aplysina* spp.

## Other massive sponges (to be recorded as "Other massive") – OTHR



*Agelas oroides*

## Birds' nest glass sponge – BIRD



*Pheronema carpenteri*

## Felt vase glass sponge – FELT



*Asconema setubalense*



**CORALS**

**Soft corals – SOFT**



*Alcyonium palmatum*

**Thick and tall red, yellow fan-shaped gorgonians – FANG**



*Acanthogorgia hirsuta*

*Paramuricea clavata*

VU

**Seapens – PENS**



*Pteroeides spinosum* and *Pennatula* spp.

**Bamboo corals – BAMB**



*Isidella elongata*

CR

**Bright yellow or salmon-pink hard corals (*Dendrophyllia* spp.) – DEND**



Dead *dendrophyllids*

*Dendrophyllia cornigera*

EN

*Dendrophyllia ramea*

VU

**Thin, delicate white, reddish, yellow fan-shaped gorgonians – THIG**



*Paramuricea macrospina*

**Precious red coral – REDC**



*Corallium rubrum*

EN

**Flexible white and salmon-pink fan-shaped gorgonians (*Eunicella* spp.) – EUNI**



*Eunicella cavolini*

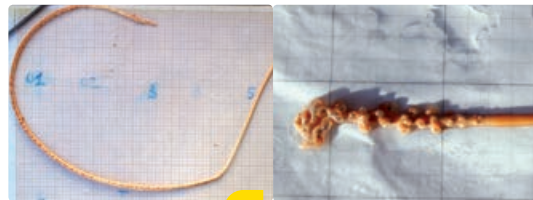
*Eunicella verrucosa*

**Salmon-pink, brittle fan-shaped gorgonians – CALL**



*Callogorgia verticillata*

**White, stem-like sea pens – STEM**



*Funiculina quadrangularis*

*Kophobelemnion stelliferum*

VU

**Candelabrum-shaped, red gorgonians – ELLP**



*Ellisella paraplexauroides*

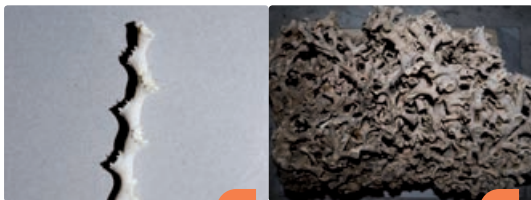
VU

**Tall, white or yellow whip gorgonians (*Viminella flagellum*) – VIMF**



*Viminella flagellum*

**White corals – WHIT**



*Madrepora oculata*

EN

*Lophelia pertusa*

EN

**Colonial hard corals – CLAD**



*Cladocora caespitosa*

EN

**Arborescent black corals – BLAC**



*Antipathella subpinnata*

*Parantipathes larix*

*Leiopathes glaberrima*

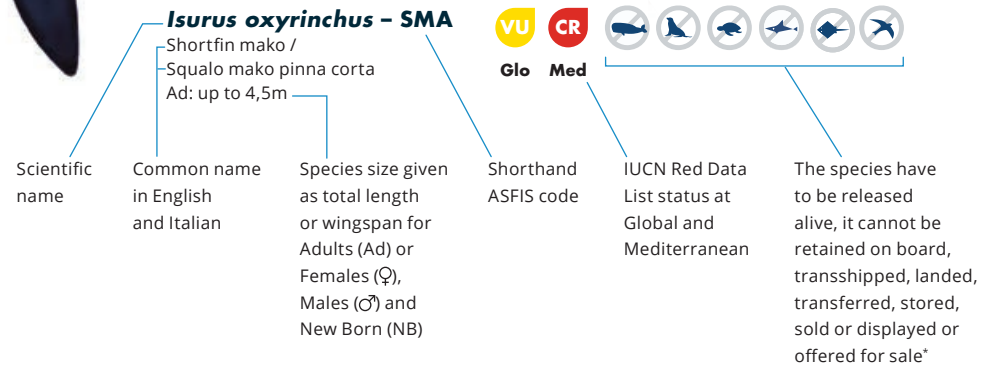
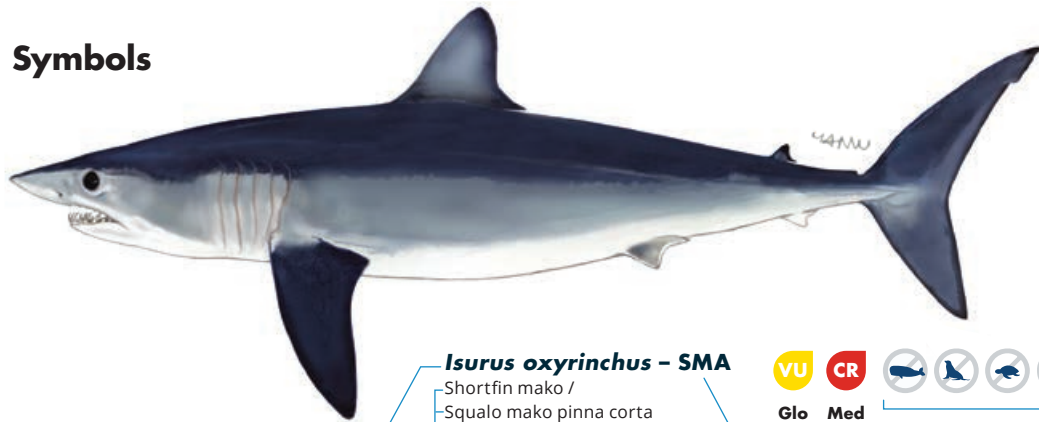
EN

*Antipathes dichotoma*

## Abbreviations

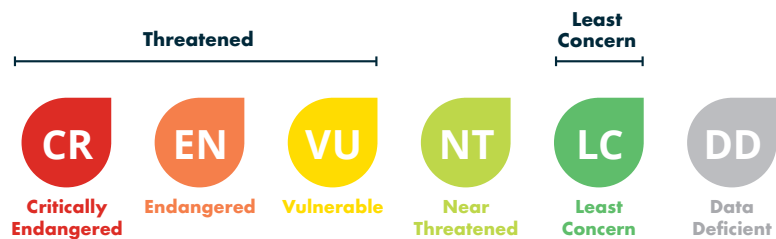
Ad: Adult  
 ♂: Male  
 ♀: Female  
 NB: New Born  
 W: Wingspan

## Symbols



## Key to IUCN Red List category symbols

For each species sheets, the IUCN categories relating to the conservation status both globally (Glo) and Mediterranean (Med) level are reported, according to the following scheme:



Geographical subarea (GSA) 18 refers to the Southern Adreatic Sea. If the incidentally caught species is not included in this guide, please refer to the **Identification guide of vulnerable species incidentally caught in Mediterranean fisheries**, which also provides detailed information on the conservation status, regulations and protection of each species (under ACCOBAMS, SPA/BD Protocol, CITES, CMS, GFCM, IUCN). Illustration source of sharks and rays: FAO Original scientific illustrations archive. Reproduced with permission.

\* GFCM recommendations related to the management and conservation of vulnerable species in the GFCM area of application: seabirds (Rec. GFCM/35/2011/3); sea turtles (Rec. GFCM/35/2011/4); cetaceans (Rec. GFCM/36/2012/2; Res. GFCM/43/2019/2); sharks and rays (Rec. GFCM/36/2012/3; Rec. GFCM/42/2018/2) and corals (Res. GFCM/43/2019/6).



QR Code