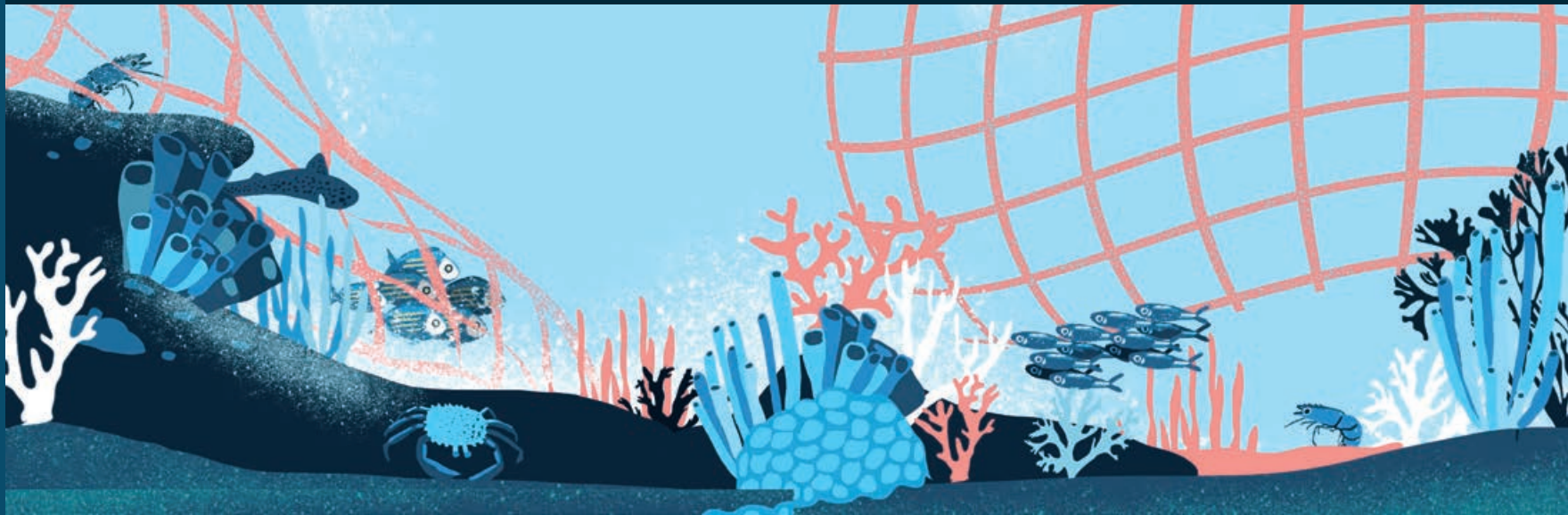


POCKET IDENTIFICATION GUIDE OF MAIN VULNERABLE SPECIES INCIDENTALLY CAUGHT IN CROATIAN FISHERIES

Simplified guide adapted for Croatia (GSA 17) from the Identification guide of vulnerable species incidentally caught in Mediterranean fisheries



MARINE MAMMALS

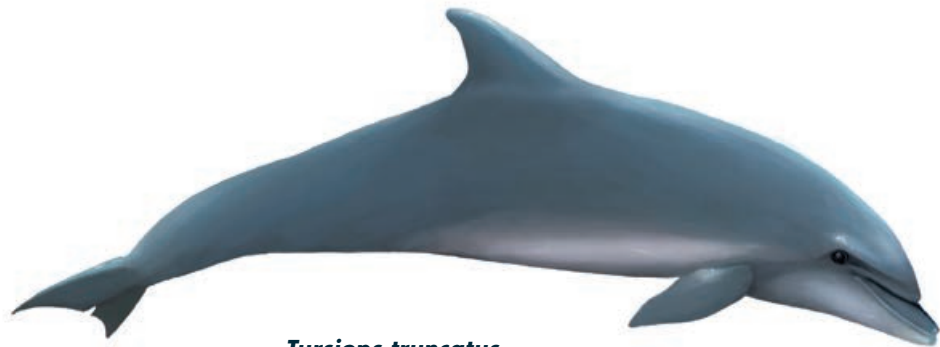


Stenella coeruleoalba

Striped dolphin /
prugasti dupin
Ad: 1.8 – 2.6 m
NB: 85 – 95 cm



Glo Med



Tursiops truncatus

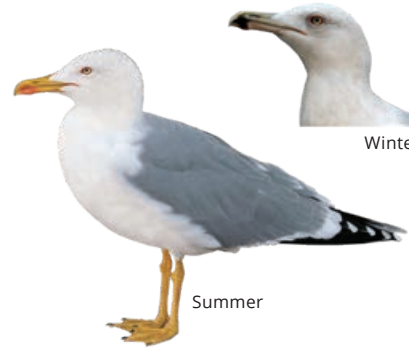
Common bottlenose dolphin /
dobri dupin
♂: 2.5 – 3.9 m
♀: 2.2 – 3.2 m
NB: 1 – 1.2 m



Glo Med



SEABIRDS



Winter

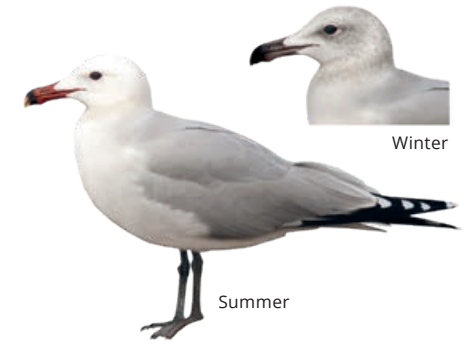
Summer

LC

Larus michahellis

Yellow-legged gull / galeb klaukavac
Wingspan: 120 – 140 cm

Glo



Winter

Summer

VU

Larus audouinii

Audouin's gull / sredozemni galeb
W: 117 – 128 cm

Glo

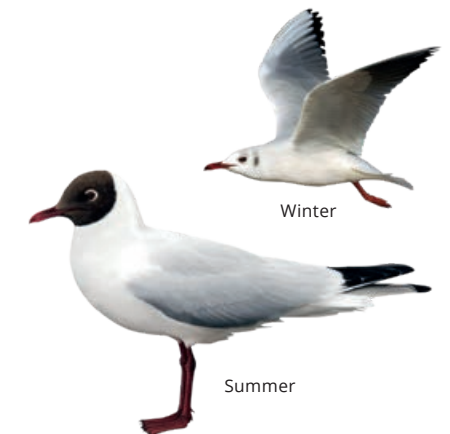


LC

Calonectris diomedea

Scopoli's shearwater / kaukal
W: 112 – 122 cm

Glo



Winter

Summer

LC

Larus ridibundus

Black-headed gull / riječni galeb
W: 86 – 99 cm

Glo



SEABIRDS



Juvenile

Adult

LC *Gulosus aristotelis desmarestii*
European shag / morski vranac (sredozemna podvrsta)
Glo W: 115 – 125 cm



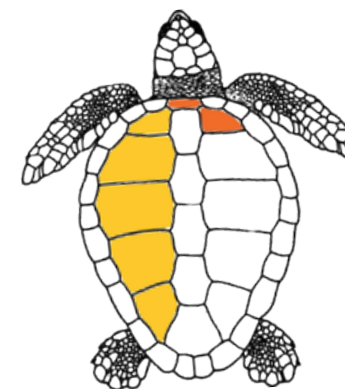
Winter

Summer

LC *Thalasseus sandvicensis*
Sandwich tern / dugokljuna čigra
Glo W: 85 – 97 cm



SEA TURTLES



VU **LC**
Glo **Med**



Caretta caretta
Loggerhead turtle / glavata želva
♂: 75 – 80 cm; ♀: 66 – 85 cm



LC *Phalacrocorax carbo*
Great Cormorant / veliki vranac
Glo W: 77 – 94 cm



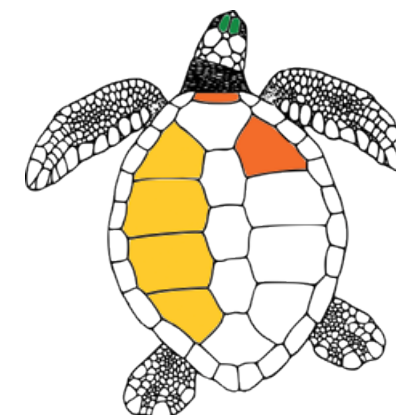
Summer

Winter

LC *Sterna hirundo*
Common tern / crvenokljuna čigra
Glo W: 70 – 80 cm



VU *Puffinus yelkouan*
Yellow-nosed shearwater / gregula
Glo W: 70 – 84 cm



EN
Glo



Chelonia mydas
Green turtle / zelena želva
Ad (♂ and ♀): 80 – 120 cm

CHONDRICHTYANS



***Alopias vulpinus* – ALV**

Common thresher / pas lisica
Ad: up to 6 m



Glo Med

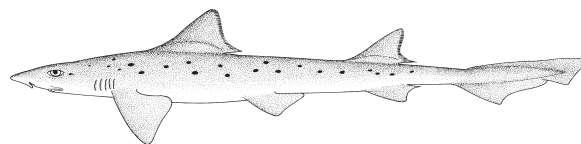


***Isurus oxyrinchus* – SMA**

Shortfin mako / dugonosa psina
Ad: up to 4.5m



Glo Med



***Mustelus punctulatus* – MPT**

Blackspotted smooth-hound /
pas mekaš pjegavi
Ad: up to 1.9 m



Glo Med



***Hexanchus griseus* – SBL**

Bluntnose six-gill shark / volonja
Ad: up to 5 m



Glo Med



***Galeorhinus galeus* – GAG**

Tope shark / butor
Ad: up to 1.6m



Glo Med

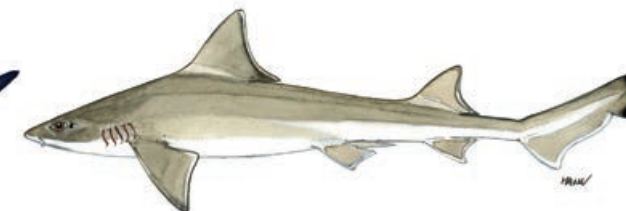


***Prionace glauca* – BSH**

Blue shark / modrulj
Ad: up to 4 m



Glo Med



***Mustelus mustelus* – SMD**

Smooth-hound / pas mekaš
Ad: up to 2 m



Glo Med



***Squalus acanthias* – DGS**

Picked dogfish / kostelj piknjavac
Ad: up to 2 m



Glo Med



***Scyliorhinus canicula* – SYC**

Small-spotted catshark / mačka bljedica
Ad: up to 1 m (60 cm in Mediterranean)



Glo Med



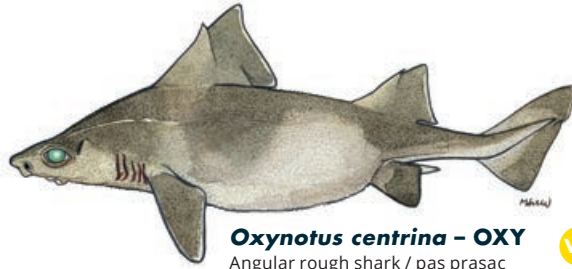
***Cetorhinus maximus* – BSK**

Basking shark / golema psina
Ad: up to 10 m



Glo Med

CHONDRICHTYANS



Oxynotus centrina – OXY
Angular rough shark / pas prasac
Ad: up to 1.5 m

VU CR

Glo Med



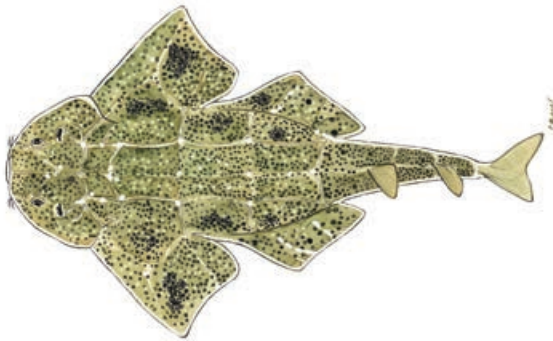
Raja asterias – JRS
Mediterranean starry ray /
raža zvjezdopjega
Ad: up to 80 cm in total length

NT NT
Glo Med



Raja miraletus – JAI
Brown ray / rača modropjega
Ad: up to 70 cm in total length

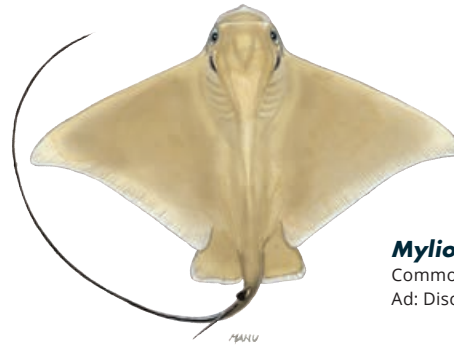
LC LC
Glo Med



Squatina squatina – AGN
Angelshark / sklat sivac
Ad: up to 2.5 m total length

CR CR

Glo Med



Myliobatis aquila – MYL
Common eagle ray / golub
Ad: Disc wide up to 1.5 m

DD VU
Glo Med



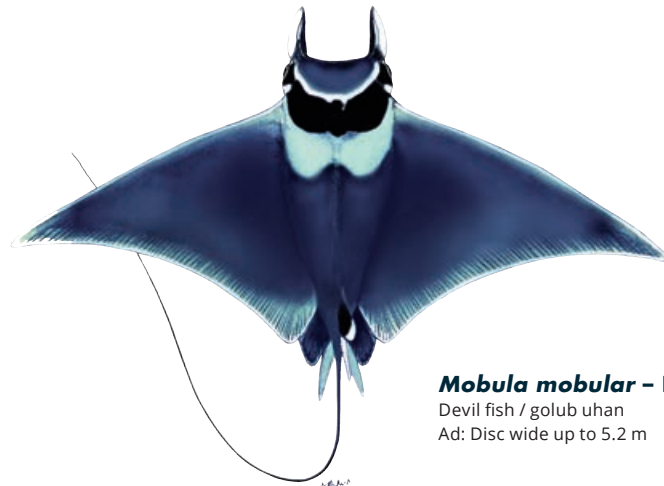
Dasyatis pastinaca – JDP
Common stingray / žutuga
Ad: Disc wide up to 0.68m

DD VU
Glo Med



Raja clavata – RJC
Thornback ray / rača kamenica
Ad: up to 90-130 cm in total length

NT NT
Glo Med



Mobula mobular – RMM
Devil fish / golub uhan
Ad: Disc wide up to 5.2 m

EN EN

Glo Med



Torpedo marmorata – TTR
Marbled electric ray / drhtulja
Ad: up to 1 m in total length

DD LC
Glo Med

SPONGES



Massive keratose sponges – KERA



Sarcotragus sp.



Sarcotragus sp.



Hippospongia communis



Ircinia variabilis

Globular sponges – GLOS



Suberites domuncula



Tethya aurantium



Thenia spp.

Massive Mediterranean stony sponge – PETR



Petrosia ficiformis (burgundy morph)



Petrosia ficiformis (white morph)

Lamellate to cup-shaped sponges – LAMS



Spongia lamella



Calyx nicaeensis

Arborescent sponges – ARBS



Axinella sp.

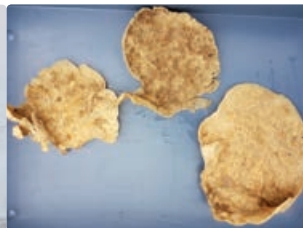


Axinella cannabina

Fan-shaped sponges – FANS



Phakellia ventilabrum



Phakellia robusta

Massive, (sub-) spherical hard sponges (*Geodia* spp.) – GEOD



Geodia cydonium

Lamellate rock sponges (*Leiodermatium* sp.) – ROCK



Leiodermatium pfeifferae

Massive-tubular gold sponges (*Aplysina* spp.) – APLY



Aplysina spp.

Other massive sponges (to be recorded as "Other massive") – OTHR



Agelas oroides

Birds' nest glass sponge – BIRD



Pheronema carpenteri

Felt vase glass sponge – FELT



Asconema setubalense

CORALS

Soft corals – SOFT



Alcyonium palmatum

Thick and tall red, yellow fan-shaped gorgonians – FANG



Acanthogorgia hirsuta

Paramuricea clavata

VU

Seapens – PENS



Pteroeides spinosum and *Pennatula* spp.

Bamboo corals – BAMB



Isidella elongata

CR

Bright yellow or salmon-pink hard corals (*Dendrophyllia* spp.) – DEND



Dead *dendrophyllids*

Dendrophyllia cornigera

EN

Dendrophyllia ramea

VU

Thin, delicate white, reddish, yellow fan-shaped gorgonians – THIG



Paramuricea macrospina

Precious red coral – REDC



Corallium rubrum

EN

Flexible white and salmon-pink fan-shaped gorgonians (*Eunicella* spp.) – EUNI



Eunicella cavolini

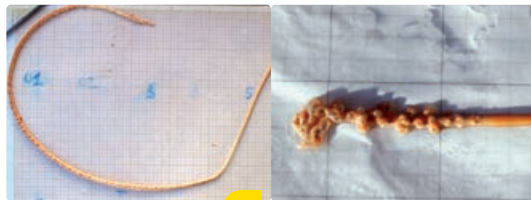
Eunicella verrucosa

Salmon-pink, brittle fan-shaped gorgonians – CALL



Callogorgia verticillata

White, stem-like sea pens – STEM

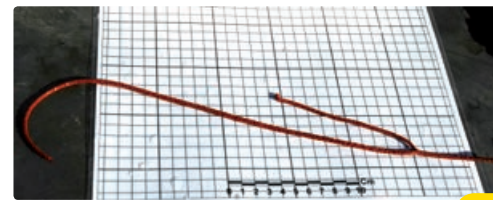


Funiculina quadrangularis

Kophobelemnion stelliferum

VU

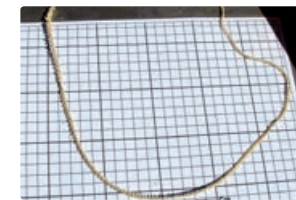
Candelabrum-shaped, red gorgonians – ELLP



Ellisella paraplexauroides

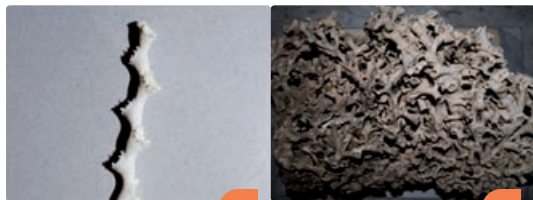
VU

Tall, white or yellow whip gorgonians (*Viminella flagellum*) – VIMF



Viminella flagellum

White corals – WHIT



Madrepora oculata

EN

Lophelia pertusa

EN

Colonial hard corals – CLAD



Cladocora caespitosa

EN

Arborescent black corals – BLAC



Antipathella subpinnata

Parantipathes larix

Leiopathes glaberrima

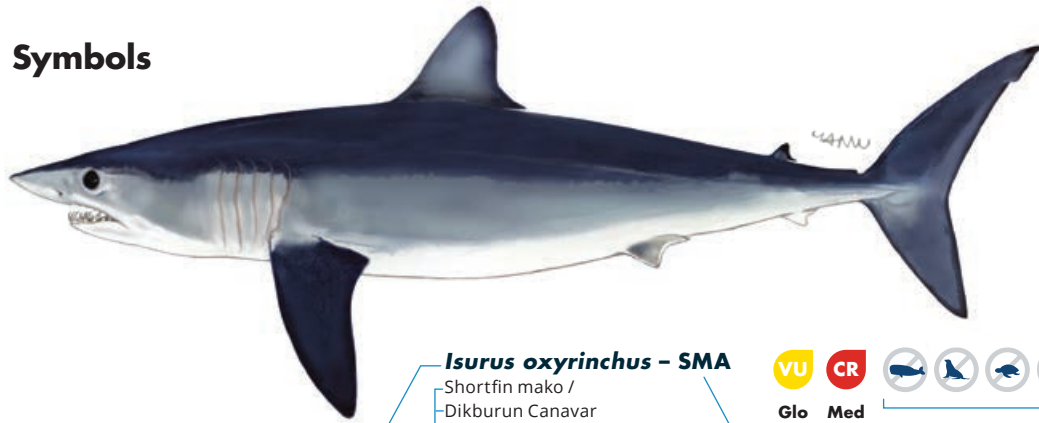
EN

Antipathes dichotoma

Abbreviations

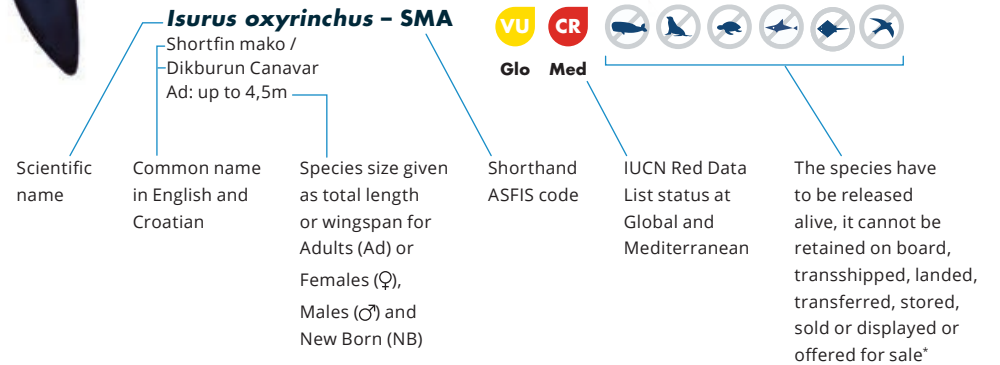
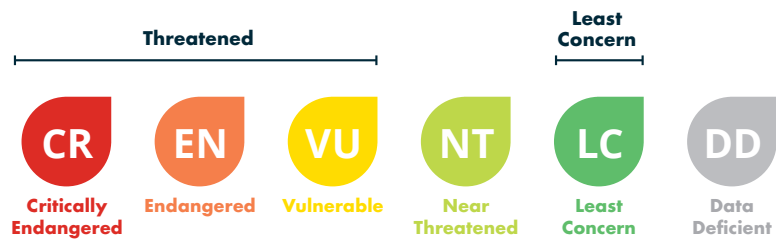
Ad: Adult
 ♂: Male
 ♀: Female
 NB: New Born
 W: Wingspan

Symbols



Key to IUCN Red List category symbols

For each species sheets, the IUCN categories relating to the conservation status both globally (Glo) and Mediterranean (Med) level are reported, according to the following scheme:



Geographical subarea (GSA) 17 refers to the Northern Adriatic Sea. If the incidentally caught species is not included in this guide, please refer to the **Identification guide of vulnerable species incidentally caught in Mediterranean fisheries**, which also provides detailed information on the conservation status, regulations and protection of each species (under ACCOBAMS, SPA/BD Protocol, CITES, CMS, GFCM, IUCN). Illustration source of sharks and rays: FAO Original scientific illustrations archive. Reproduced with permission.

* GFCM recommendations related to the management and conservation of vulnerable species in the GFCM area of application: seabirds (Rec. GFCM/35/2011/3); sea turtles (Rec. GFCM/35/2011/4); cetaceans (Rec. GFCM/36/2012/2; Res. GFCM/43/2019/2); sharks and rays (Rec. GFCM/36/2012/3; Rec. GFCM/42/2018/2) and corals (Res. GFCM/43/2019/6); Ordinance on strictly protected species (Official Gazette 144/2013)



QR Code